

Curvv.ev

SUV coupé



BNCAP
5-star safety rating*

The image shows the Bharat NCAP logo, which is a circular emblem with a yellow and black checkered pattern. To the right of the logo are two rows of stars. The top row consists of five purple stars, with the text '30.81/32 Adult' below them. The bottom row consists of five yellow stars, with the text '44.83/49 Child' below them. There are also two small circular icons: one with a person running and another with a car and a person.

i n d e x —

1. Shaped to Stun
2. Shaped for Innovative Technology
3. Shaped for Grandeur
4. Shaped for Absolute Safety
5. Shaped for Performance
6. Shaped for your various Charging needs
7. Shaped for different Personas

shaped to stun —

Up your style game with SUV allure and coupé sophistication.



Differentiated coupé like design

Experience the allure of an SUV with the sophistication of a coupé.



Body cladding in piano black finish

Define your elegance with every drive.



Squared wheel arches



Bumper skid plates in satin silver finish

Combine toughness with style, giving your vehicle a sophisticated yet robust appearance.



Rear spoiler in gloss piano black

Designed for stunning looks and optimised aerodynamics.

Contrast roof in black

Complements the sleek coupé design adding a touch of sophistication.



**Smart digital connected DRL
with welcome & goodbye animation**

Greet and bid farewell with our
distinctive signature DRLs.



**Sequential
turn indicators**

Lead the way with
style and safety.



Smart charging animation

Stay informed about your
charge status at a glance.



LED projector head lamp

Drive with confidence
and clarity with
unmatched visibility.



Smart digital connected LED tail lamps with animation

Cutting-edge lighting technology meets style.



Smart digital steering wheel

Superior ergonomic experience with seamlessly integrated controls.



Flush door handles

Enhanced vehicle aesthetics while adding to aerodynamic efficiency.



R18 alloy wheels with aero inserts

Stylish, modern and aerodynamic design for a smooth and efficient drive.



Electric front charging lid

Convenient electric front charging lid for hassle-free charging every time.



Digital dashboard

Your command center for the long journeys ahead.



Phyigital control panel

For simplified operation of essential functions.



Smart digital shifter

Sleek looks and a futuristic driving experience.



Voice assisted panoramic sunroof with mood lighting

Enjoy the sky above and set the perfect mood for your journey, all at your command.



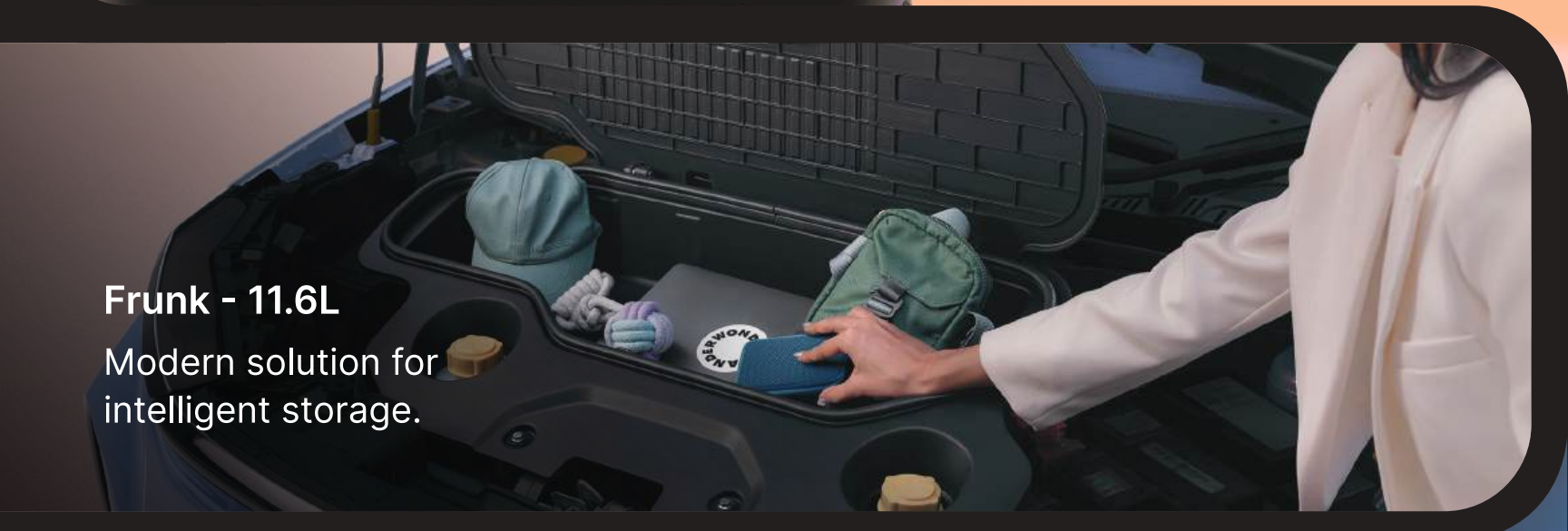
Multi mood ambient lighting

Illuminate your journey with the perfect ambiance, tailored to your every mood.



Boot space - 500L

There's always room for all your adventures, big or small.



Frunk - 11.6L

Modern solution for intelligent storage.



Sharkfin antenna with GPS

Where sleek styling meets superior connectivity.

shaped for innovative technology —

Get entertainment and productivity on the go with modern tech.



Arcade.ev app suite~

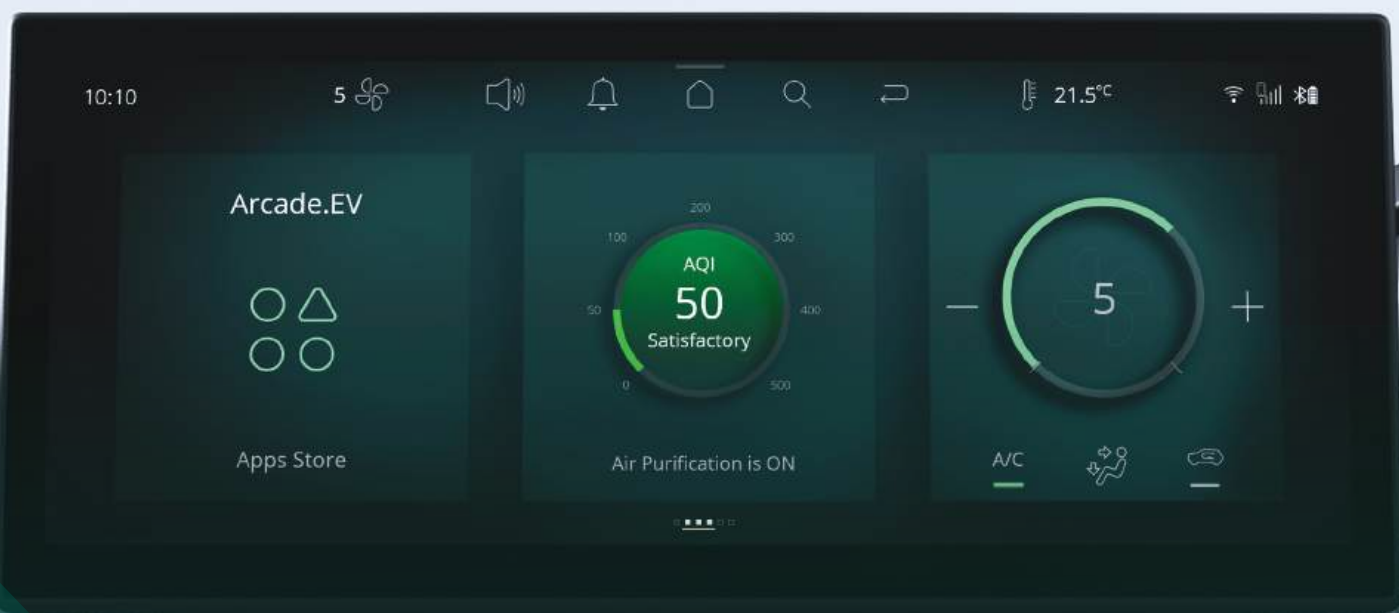
Indulge in a world of entertainment and productivity, designed to cater to your diverse needs.

*Feature may not be available in Nepal



31.24 cm (12.3") Cinematic touchscreen Infotainment system by HARMAN™

Bring your infotainment to life with stunning clarity and detail.



JBL cinematic sound system

Indulge in an experience that offers crystal-clear and immersive sound that enhances your in-car driving experience.

The JBL logo is displayed in white on a dark, circular-patterned speaker grille.

Wireless Android Auto™ and Apple CarPlay™

Connect wirelessly with ease.

High-quality speakers (9 speakers incl. subwoofer)

Ensuring every note and beat is delivered with exceptional clarity and depth.



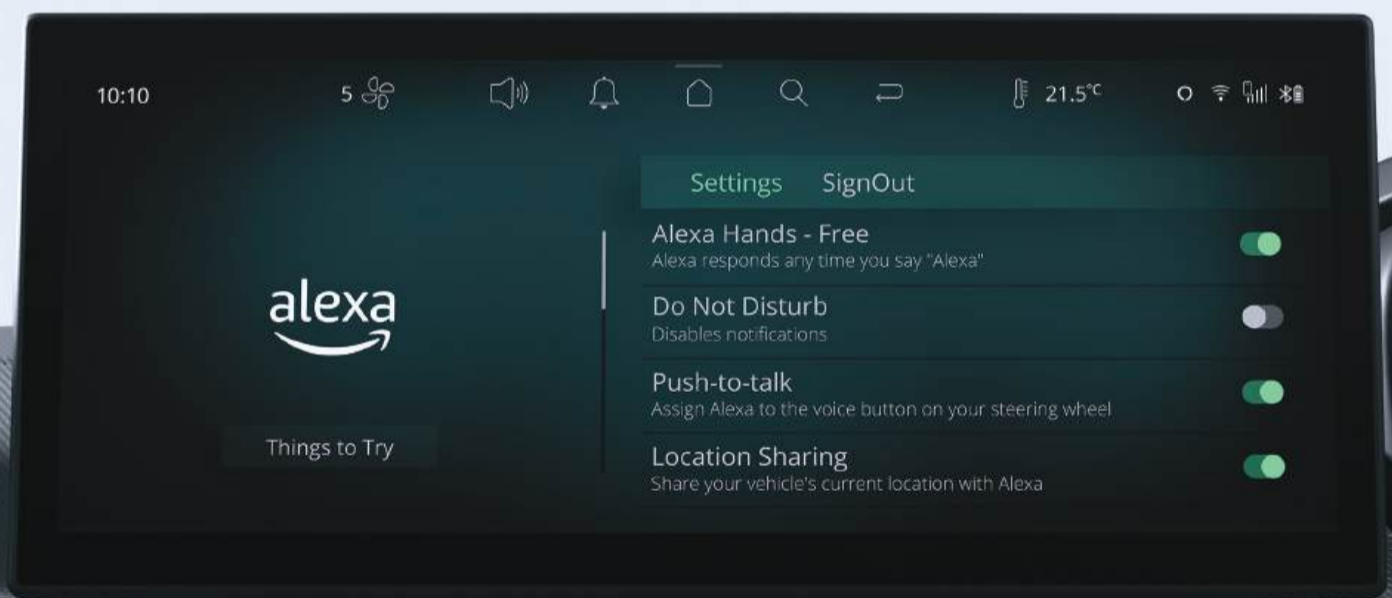
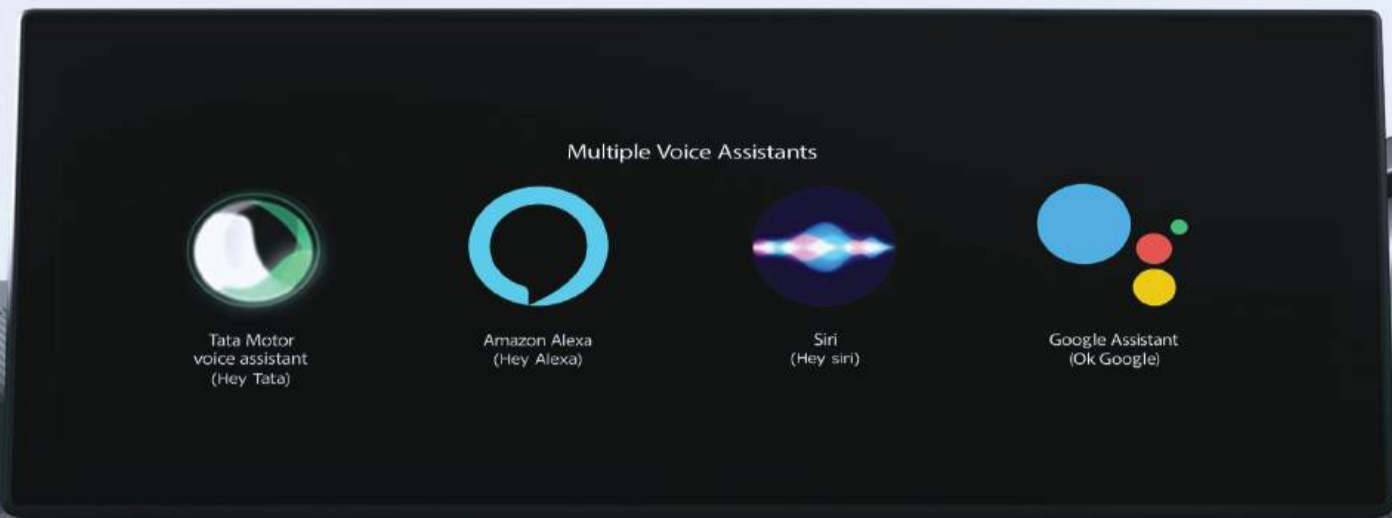
JBL sound modes

Multiple audio modes that enhance in-vehicle acoustic experience.



Multiple voice assistants

Interact effortlessly, ensuring seamless integration and enhanced connectivity.



Alexa voice assist

Access a world of convenience with Alexa voice assist.

Vehicle to vehicle (V2V) charging^{^^^}

Share power with compatible vehicles.



Vehicle to load (V2L) technology^{***}

Whether it is a drone, e-scooter or a camping experience - transform your EV into a mobile power hub.



Powered tailgate with gesture activation

Convenient loading and unloading with a simple kick gesture.



26.03 cm (10.25") Digital cockpit

Stay informed and in control with customisable displays tailored to your preferences.



Multi dial view in cluster

Switch effortlessly between multiple displays.



OTA updates

Your car stays up to date with Over-the-Air Updates.

*Feature may not be available in Nepal



Air purifier with AQI display

Breathe fresh, drive safe.



Electric ORVM with autofold

Improved driving experience with easy mirror control.



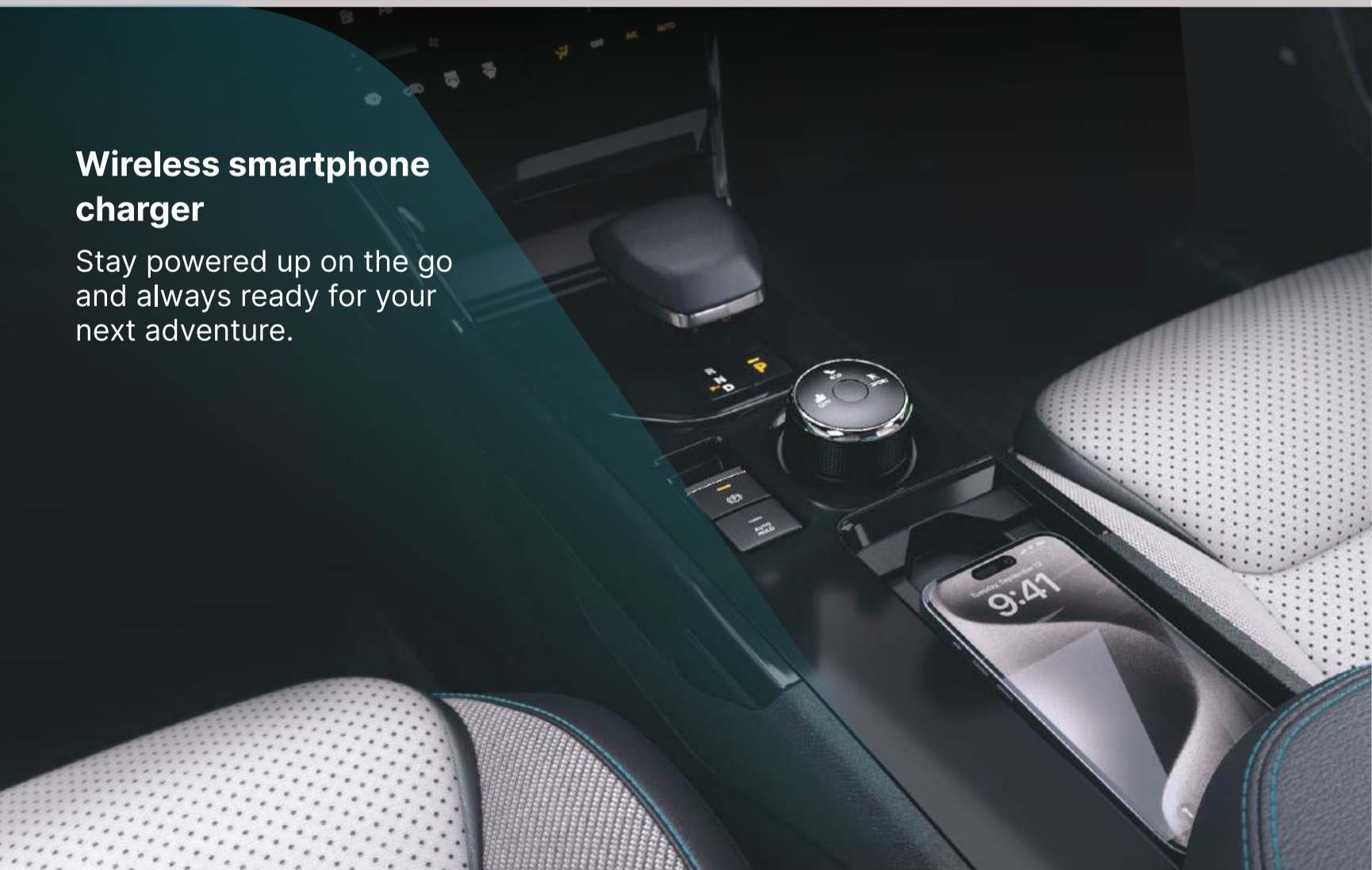
Auto-dimming IRVM

Glare-free night drives.



Wireless smartphone charger

Stay powered up on the go and always ready for your next adventure.



shaped for grandeur —

Indulge in the luxury of first-class driving experience.





Advanced comfort seats with ventilation

Luxurious and refreshing comfort for a first-class driving experience.



6 way power adjustable driver seat

Personalise your driving position with power adjustable settings.



6 way adjustable co-driver seat
Equal comfort for co-driver.



60:40 Rear split seats with centre armrest
Adapt to your cargo and passenger needs.

2 stage rear seat reclining

Personalised comfort for rear passengers during long journeys.



Rear AC vents

Efficient airflow for rear passengers.



Cooled glove box

A ventilated compartment for refreshing storage on the go.



Automatic headlamps

Optimal illumination on the road.





Rain sensing wipers

Clear visibility and enhanced safety during inclement weather.

FATC with express cooling

Personalised comfort for every drive.



Cruise control

Maintain your desired speed with precision and ease on long journeys.

Keyless entry & push-button start

Unlock and go – effortless convenience at your fingertips.



Front & rear fast charge C type 45W

Fast charge your devices.

shaped for absolute safety —

Stay safe keep the adventure alive on every journey.



BNCAP
5-star safety rating*



Advanced driver assistance - Level 2 ^Δ

An advanced driver assistance suite that offers a shield of protection on every journey.



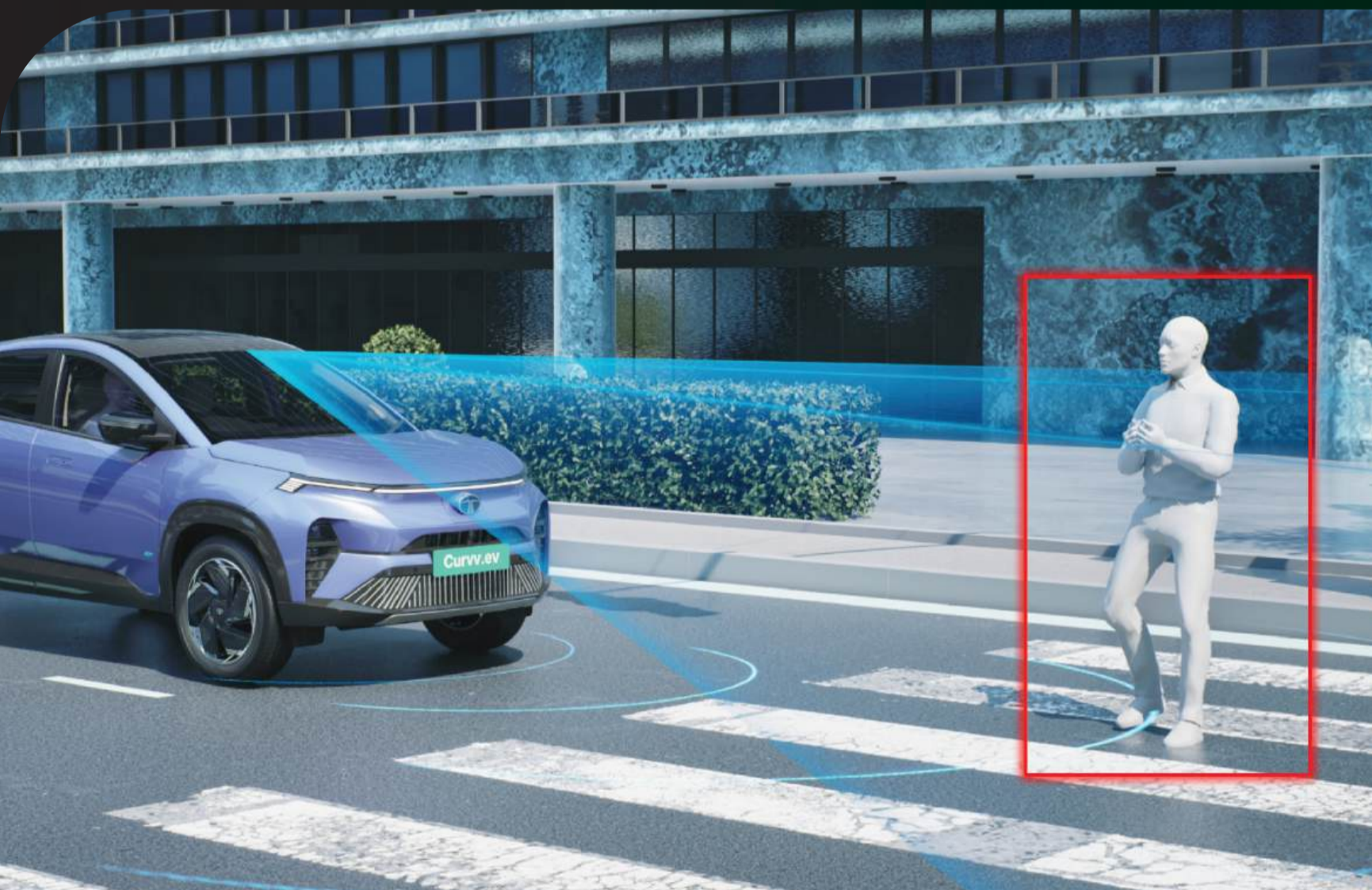
Adaptive Cruise Control with stop & go (ACC) and Adaptive steering assist (ASA)

Cruise through long journeys maintaining a pre-determined distance from the vehicle in front, even in stop-and-go traffic.



Lane Keep Assist (LKA)

Receive gentle nudges to keep you on course and in control on every curve.



Autonomous Emergency Braking (AEB)

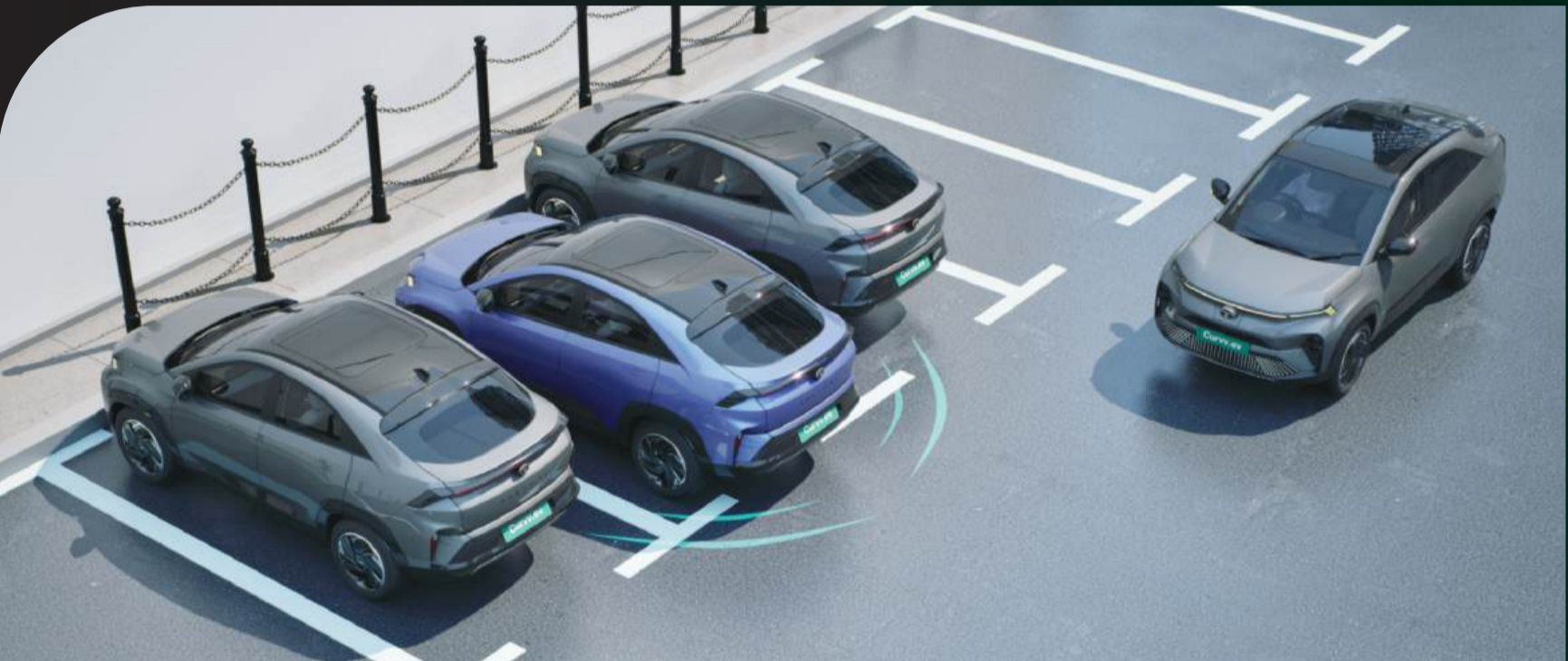
Vehicle, Pedestrian, Cyclist, Junction

Automatically applies brakes to prevent or mitigate collisions and keep you safe.



Traffic Sign Recognition (TSR) and Over Speed Alert (OSA)

Detects and displays traffic signs, ensuring you're aware of speed limits and other road regulations.



Rear Cross Traffic Alert (RCTA)

Detects approaching vehicles and alerts you of impending collision.

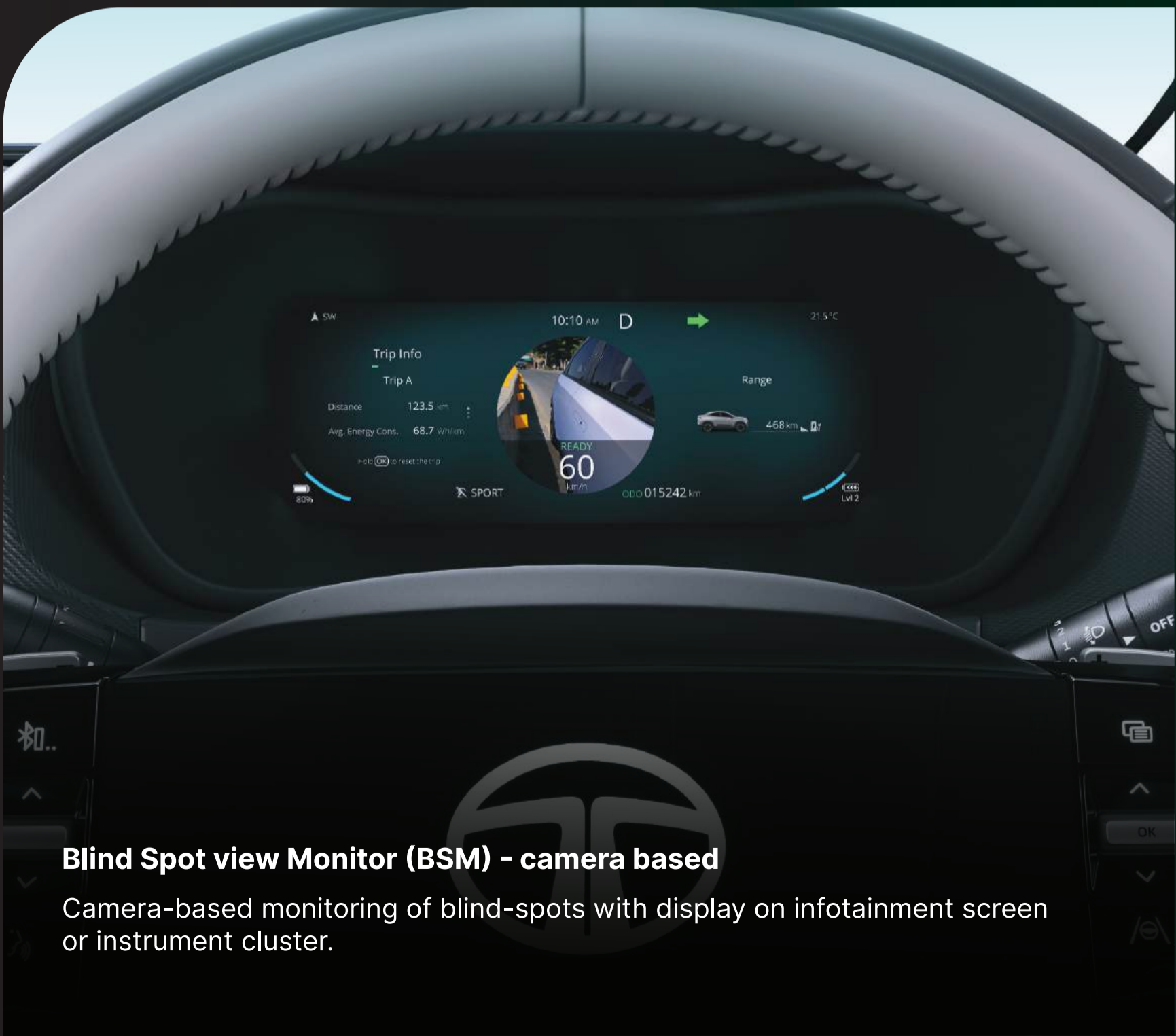


Lane Change Alert (LCA)

Alerts you of approaching vehicles while indicating a lane change.

360° 3D surround view camera system

Enhanced parking and maneuvering safety.



Blind Spot view Monitor (BSM) - camera based

Camera-based monitoring of blind-spots with display on infotainment screen or instrument cluster.



Blind Spot Detection (BSD) - radar based

Radar-based monitoring of blind-spots with warning indication on the ORVM.

Lane Departure Warning (LDW)

Get warnings and assistance to prevent unintended lane departures.

Forward Collision Warning (FCW)

Receive warnings to prevent front collisions.

High Beam Assist (HBA)

Ensures optimal visibility without dazzling other drivers.

Door Open Alert on ORVM

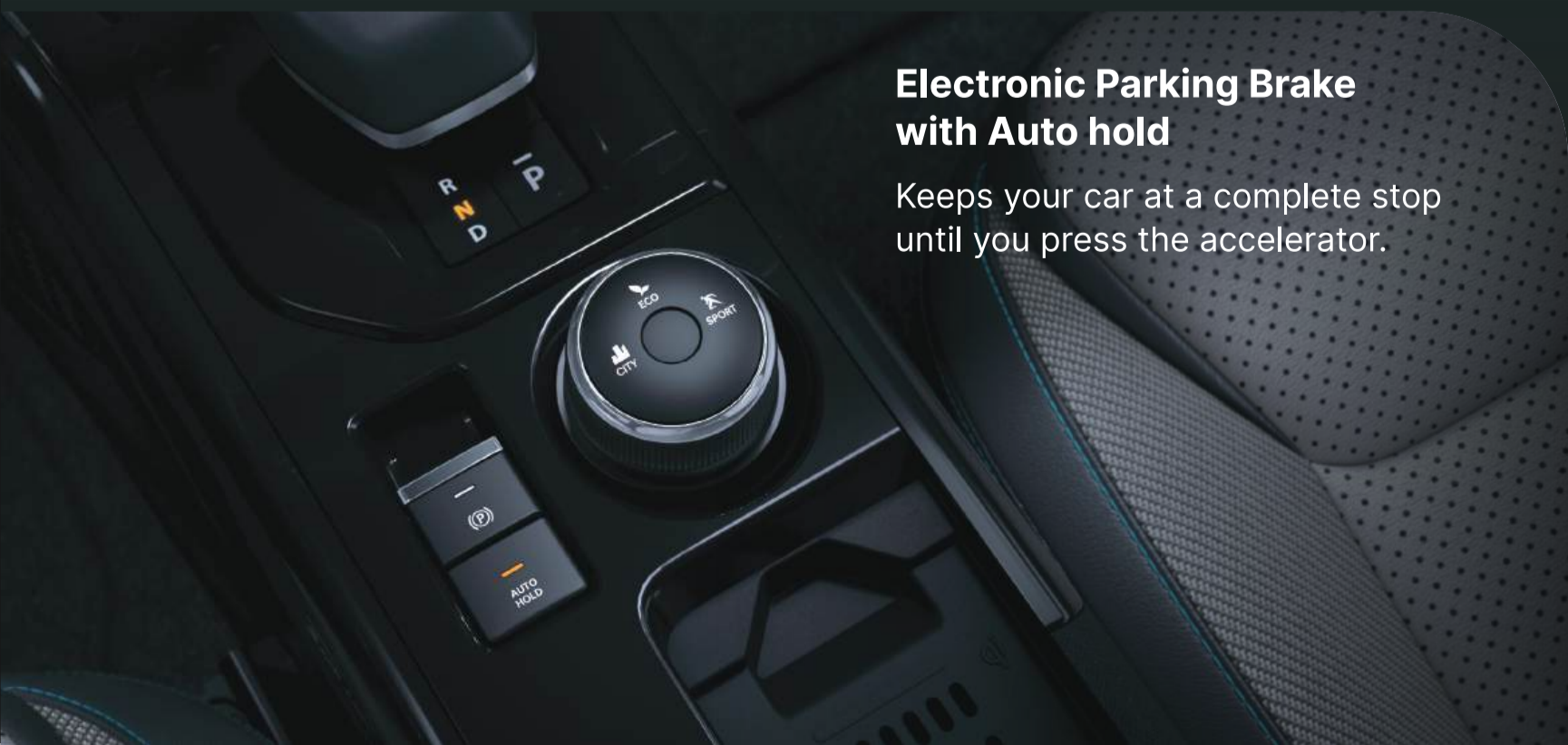
Alerts occupants while opening doors.

Driver doze-off alert

Electronic stability control based driver attention alert.

Rear Collision Warning (RCW)

Ensures you are alerted to any approaching dangers from the rear.



Electronic Parking Brake with Auto hold

Keeps your car at a complete stop until you press the accelerator.



SOS call function###

Immediate assistance in emergencies or breakdown.

*Feature may not be available in Nepal



Front parking sensors

Parking made easier with front assist sensors.

6 airbags

6 strategically placed airbags to minimise injury in the event of a collision.



All wheel disc brakes

Enhanced safety with disc brakes on all wheels for optimal stopping power.



Acoustic Vehicle Alert System (AVAS)^Φ

Signature sounds to alert pedestrians and other road users of your vehicle's approach.

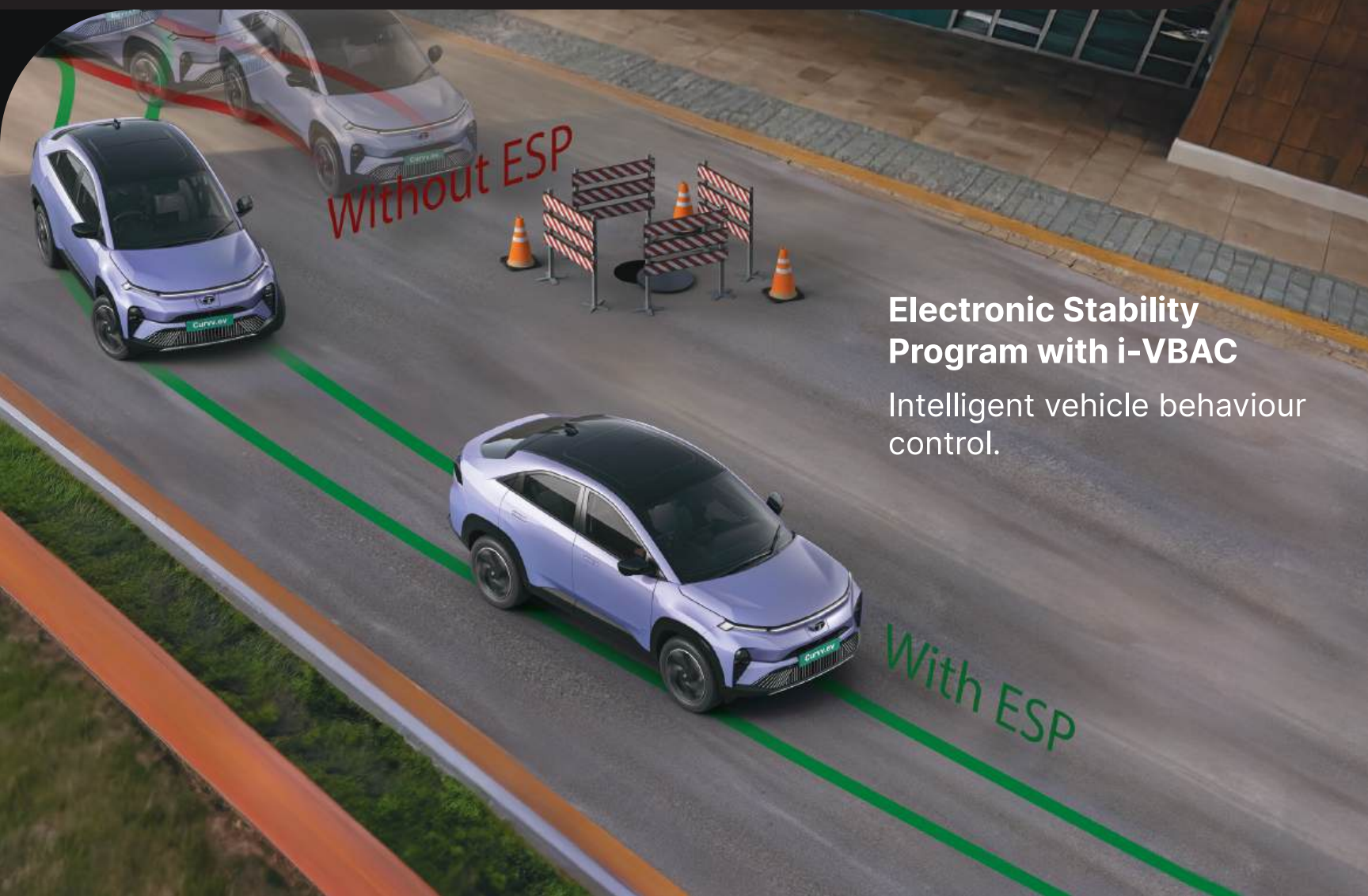
Hill hold assist

Holds your car from rolling back on any incline till you accelerate forward.



Hill descent control

Maintain a controlled speed for safer downhill driving.



Electronic Stability Program with i-VBAC

Intelligent vehicle behaviour control.

shaped for performance —

Experience dynamic performance for unforgettable drives.



Power output of 98 kW

Unleash the power of the electric powertrain at the tap of the pedal.

Instant torque of 215 Nm

Instant peak torque for an exciting drive feel.

0-100 Km/h in 8.6 s

Fast when you need it to be.



Multi drive modes - Eco, City, Sport

Tailor your driving experience to suit your preferences.

Paddle shifters for multi-mode regenerative braking

Multiple regenerative braking modes to suit your regen preferences at the tap of a paddle.



All-new gen-2 motor

Robust performance and efficiency for an electrifying driving experience.



Liquid cooled battery pack

Ensuring Thermal efficiency for optimal battery health and durability.

IP67 rated battery pack and motor

Drive worry-free with high ingress protection standards.



Smart power electronics

Smart algorithms to control vehicle electronics, charging speeds and battery thermal management.

shaped for various charging needs —

Enjoy hassle-free drives with multiple charging options.



DC fast charging

Minimal downtime and maximum convenience.
SOC 10% - 80% in 40[^] minutes.



7.2 kW AC home wall box charger

Power up at home seamlessly.
SOC 10% - 100% in 7.9[^] hours for Curvv.ev 55.



15A portable charger

Enjoy charging convenience wherever you go. Charges with any 15A power socket.



shaped for different personas —



Multiple colour choices to pick from

Empowered



Virtual Sunrise



Empowered Oxide



Flame Red



Pure Grey



Pristine White

The images shown represent color availability for different personas only. Specifications may vary for each persona. The displayed colors may differ from the actual colors due to variations in screen settings, lighting conditions, and material finishes. For the most accurate color representation, please visit your nearest dealer.

Curvv.ev - technical specifications and features

	Curvv.ev 55
electric drivetrain	
Motor (Type)	Permanent Magnet Synchronous Motor
Electric Motor Power (kW/PS)	98
Electric Motor Torque (Nm)	215
Multi Drive Modes	Multi Drive Modes - Eco, City & Sport
Battery Pack (kWh)	55
Thermal Management System	Liquid Cooled System
Ingress Protection for Motor & Battery Pack	IP67
Acceleration (0-100 km/h in sec)	8.6"
Emission	Zero Tailpipe Emission
smart drive features	
Smart Regenerative Braking	Multi-Mode Regenerative Braking 4 Levels Level 0 - 1 - 2 - 3 0 - No Regen 3 - Max Regen
Paddle Shifters to Control Regen Modes	✓
Customizable Single Pedal Drive	✓
dimensions	
Length x Width x Height (mm)	4310 × 1810 × 1637
Wheelbase (mm)	2560
Unladen Ground Clearance (mm)	186
Boot space (L)	500
steering	
Steering	Electrically Power Assisted
Turning Circle Radius (m)	5.35
brakes	
Front, Rear	Disc brakes with i-VBAC
suspension	
Front Suspension	Independent McPherson Strut with Coil Spring
Rear Suspension	Twist Beam with Dual Path Strut
wheels & tyres	
Size	215/55 R18
Low Rolling Resistance Tyres	✓
charging	
Charging Standard	CCS2
Portable Charging Cable	Yes
Charging Options	15A Socket, 7.2 kW AC Wall Box, DC Fast Charger
Charger Type Included	7.2 kW AC Wall Box
Estimated DC Fast Charging Time (SOC 10% to 80% DC Fast Charger)	~ 40 min [^] (70 kW+ charger)
Estimated AC Fast Charging Time (SOC 10% to 100% from 7.2 kW AC Fast Charger)	~ 7.9hrs [^]
Estimated Regular Charging Time (SOC 10% to 100% from an 15A plug point)	~ 21hrs [^]
bi-directional charging	
Vehicle to Vehicle Charging (V2V ^{^^} Charging) (kVA)	5
Vehicle to Load Technology (V2L ^{***} Charging) (kVA)	3.3
Discharge Limit	Customizable upto 30% SOC ^o
warranty	
Battery Pack and Motor Warranty	8 Year or 1,60,000 km (whichever is earlier)
Vehicle Warranty	3 Year or 1,25,000 km (whichever is earlier)
driving range	
TATA.ev C75 estimated real world driving range (km)	400-425*
In-Market Testing Range (km)	380*

Exterior

- Smart Digital DRLs
- Sequential Indicators
- LED Projector Auto Headlamps
- Front Fog Lamps with Cornering Function
- Centre Position Lamp and Connected Tail Lamps
- Welcome & Goodbye Sequence
- Flush Door Handles
- R18 Alloy Wheels with Aero Inserts

Interior

- Leatherette Upholstery
- Leatherette Wrapped Steering Wheel
- Smart Digital Steering Wheel
- Smart Digital Shifter
- Multi Mood Ambient Lighting
- Phygital Control Panel

Comfort and Convenience

- Voice assisted Panoramic Sunroof with Mood lighting
- Front Seats Ventilation
- 6 Way Power Adjustable Driver Seat
- 6 Way Adjustable Co-Driver Seat
- 2 Stage Rear Seat Recline
- Cruise Control
- Powered Tailgate with Gesture Activation
- Air Purifier with AQI Display
- Wireless Smartphone Charger
- Push Entry Push Start (PEPS)
- 60:40 Rear Split Seats with Centre Armrest
- Multi Drive Modes - Eco, City & Sport

Comfort and Convenience

- Auto Dimming IRVM
- Automatic Defogger
- Charging Indicator
- Cooled & Illuminated Glove Box
- Electric ORVM with Autofold
- Express Cooling
- Fully Automatic Climate Control
- Front & Rear Fast Charge C Type 45W
- Front Armrest
- Frunk
- Paddle Shifter for Regen Modes
- All Power Windows
- Rain Sensing Wipers
- Rear AC Vents
- V2L Technology***
- V2V Charging^^^

Infotainment

- 31.24 cm Cinematic Touchscreen Infotainment by HARMAN™
- 9 Speaker JBL Cinematic Sound System (4 Speakers + 4 Tweeters + 1 Subwoofer)
- JBL Sound Modes
- 26.03 cm Digital Cockpit (Instrument Cluster)
- Android Auto™ & Apple CarPlay™ over WiFi
- Navigation in Cockpit - Driver View Maps
- Multiple Voice Assistants (Native, Siri, Google Assistant, Alexa)

Safety

- Level 2 ADAS^Δ
 - Adaptive Cruise Control with Stop & Go (ACC)
 - Adaptive Steering Assist (ASA)
 - Autonomous Emergency Braking - Cyclist (AEB - C)
 - Autonomous Emergency Braking - Junction (AEB - J)
 - Autonomous Emergency Braking - Pedestrian (AEB - P)
 - Autonomous Emergency Braking - Vehicle (AEB - V)
 - Door Open Alert on ORVM
 - Driver Doze-off Alert
 - Forward Collision Warning (FCW)
 - High Beam Assist (HBA)
 - Lane Change Alert (LCA)
 - Lane Departure Warning (LDW)
 - Lane Keep Assist (LKA)
 - Over Speed Alert (OSA)
 - Rear Collision Warning (RCW)
 - Rear Cross Traffic Alert (RCTA)
 - Traffic Sign Recognition (TSR)
 - Blind Spot Detection (BSD) - Radar based
 - Blind Spot View Monitor (BSM) - Camera based
 - 360° 3D Surround View Camera System
- 6 Airbags
- All Wheel Disc Brakes
- Electric Parking Brake with Auto Hold
- ESP with i-VBAC
- Front Parking Sensors
- Acoustic Vehicle Alert System (AVAS)^Φ
- Tire Pressure Monitoring System

Disclaimers;

^ΔUnder ambient test conditions. ^ΛAs per internal testing data, under ambient test temperature conditions. ^{*}Tata.ev C75 estimated real-world driving range (KM), ^{*}In-market testing range (KM), actual performance figures may vary depending on various conditions including driving pattern, etc. ^{^^}Smart watch is not part of vehicle equipment & accessories. ^{^^^}Applicable for compatible sink models only at a power output of 5kVA. ^{***}Maximum amount of power output is 3kVA. ^{**}customers will be able to utilize IRA.ev services for one year from the date of activation. Post completion of one year, customers can subscribe to IRA.ev by paying subscription fees. [†]linked with active iRA.ev login. ^{***}Available in select cities. [∅]Only for Empowered Persona. [∅]The Acoustic Vehicle Alerting System (AVAS) enhances pedestrian awareness at speeds up to 20 kmph. It complies with safety regulations but should not replace vigilant driving practices. ^ΔAdvanced driver assistant systems (ADAS) is not a substitute for human eye or driver vigilance. It is a driver assist system only to enhance safety and driving experience. The driver will remain responsible for safe, vigilant and attentive driving. Accessories/features shown may not be part of the standard fitment. The specification above are subject to change. Some of the equipment illustrated or described above may not be supplied as standard equipment and may be available at extra cost. Tata Passenger Electric Mobility reserves the right to change specification & equipment of any product without prior notice. Please consult your nearby dealer for full information and availability on colours and trim. The images shown represent color availability for different personas only. Specifications may vary for each persona. The displayed colors may differ from the actual colors due to variations in screen settings, lighting conditions, and material finishes. For the most accurate color representation, please visit your nearest dealer.